

Using the Washing Machine

Thanks for staying at PP #11! Instruction booklet is in the blue folder

How to Use the Atlas Washing Machine

It is stored in the bathroom behind the door



For those of you who do not know how to use this type of washing machine and do not know spanish, I will try and provide step by step instructions here. First – the knobs.

First knob on the left-Time wash timer-how long your clothes will get washed for-usually 6-9 minutes is long enough

2nd knob Type of wash-do NOT overfill so keep on Normal

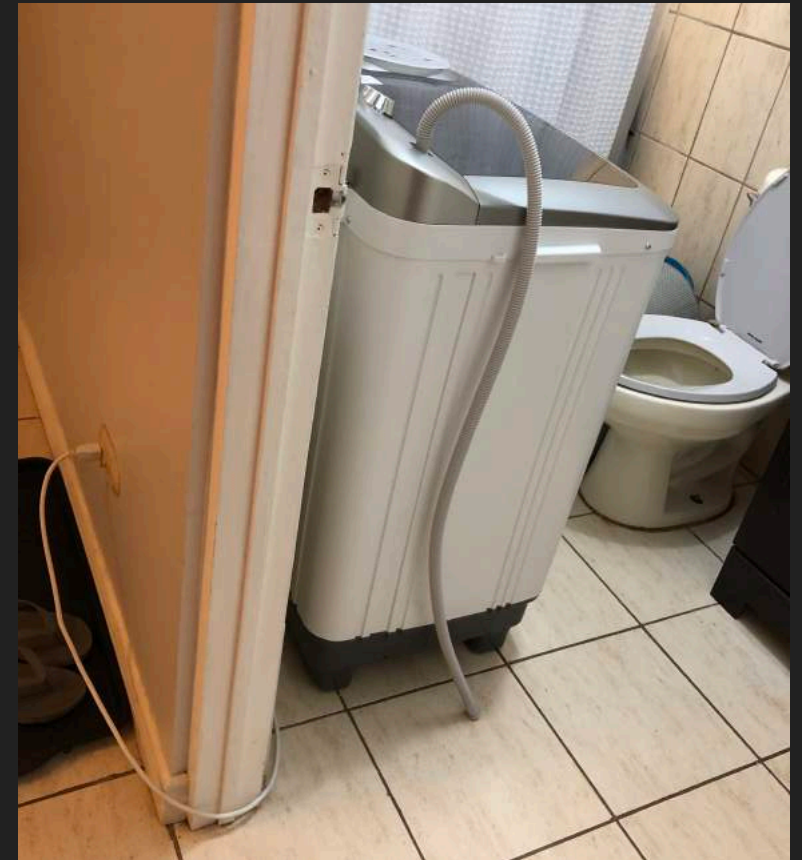
3rd knob top means wash/rinse if you move the knob to the right DESAGUAR means drain-do that at the very last thing you do

Last knob-spin timer to dry your clothes-this is what the little spot on the right is for

How to Use the Atlas Washing Machine



Plug the machine in using the plug on the outside- this will allow you to move it to the sink to fill it up and let it drain into the tub



How to Use the Atlas Washing Machine



Once you have it situated, you can take the thinner hose (that can detach and hook it up to the sink-turn the sink on and the hose basically transports water into the tub of the machine



Takes about 10 minutes to fill up right before the "L" that's on the inside where the lint holder is. I can usually get 10-12 articles of clothing in that amount of water

How to Use the Atlas Washing Machine



Once it's filled with water, put your detergent in. Then add clothes. Then put the top on. Then put the time to 6 or 9 minutes. It shouldn't need any longer.



How to Use the Atlas Washing Machine



This video shows what it should look like as it spins your clothes

Once the timer goes off, you are on to step 2! You take your clothes out (I like to squeeze the excess water out of them before I put them into the spinner) and put them into the spinner to spin dry/rinse/spin dry (in that order).

You can spin dry about half the clothes at a time. Once you put your clothes in, the plastic circle goes on top of them. You then turn the spinner timer (far right knob) to 2 minutes. It should spin without sounding crazy (clunky). If it doesn't sound right, open it up and try to even out the clothes before putting the plastic thing back on top of them.

How to Use the Atlas Washing Machine



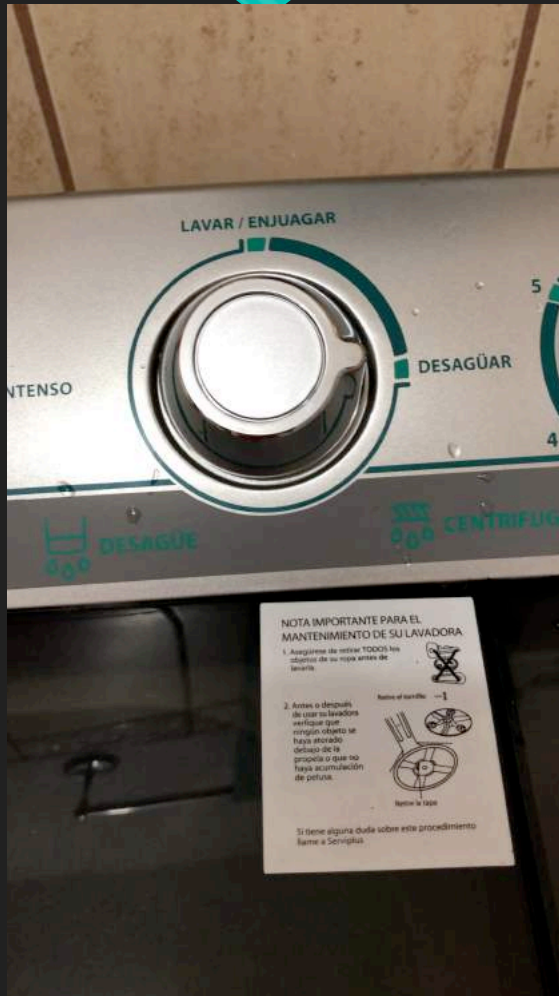
Plastic thing
that goes on
top of the
clothes

Once the clothes have spun for 2 minutes, you can then hook up the water hose again, putting fresh cool water into the spinner to rinse your clothes. You don't need to add too much water (I timed it for about 3 minutes)

Reset the time to 3 minutes. The drain should periodically spit out water into the shower.

Once this is done, you are done! All in all it might take about 25 minutes for a small load of laundry. It doesn't come out completely dry but air drying is pretty quick in this heat and is a much easier/least costly way to do some laundry while on vacation.

How to Use the Atlas Washing Machine



The last thing you do is move the 3rd knob from LAVAR (wash) to DESAGUAR (drain). Make sure the hose connected at the bottom is draining into the shower so excess water can run into the drain.

Draining the water is as simple as moving the knob. It takes about 5 minutes to drain- please make sure you physically take the hose and make sure the rest of the water has drained (gravity may not do the full job) then hook it back up to the side latch and slide it back into place behind the door. Make sure the knob is back to LAVAR.

THANKS AND GREAT JOB!